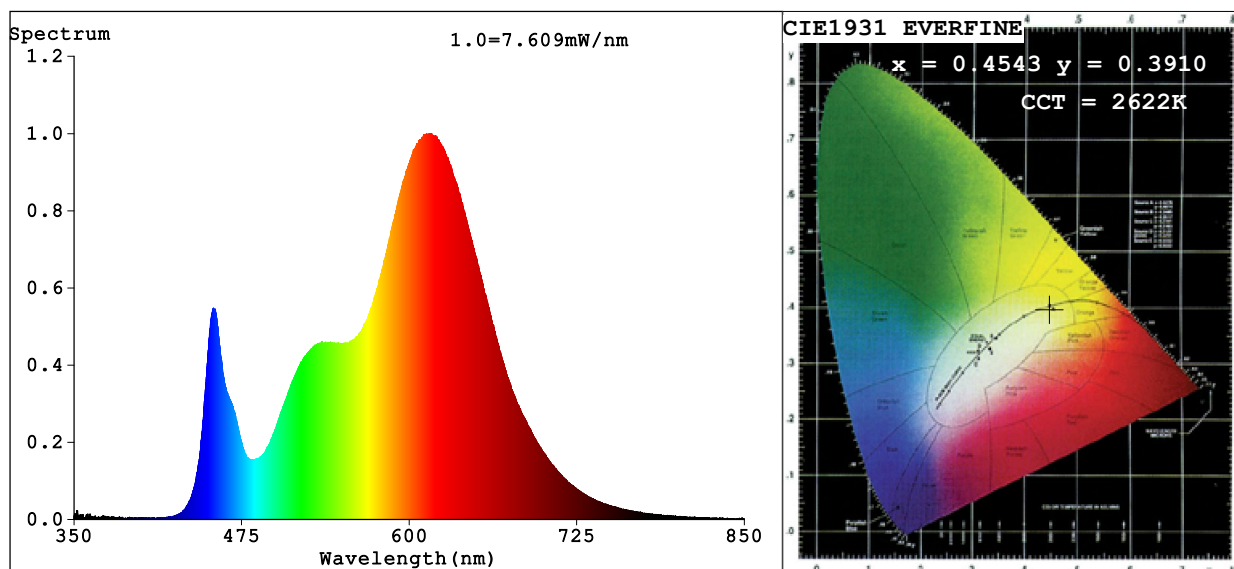


## Spectrum Test Report



### Color Parameters:

Chromaticity Coordinate:  $x=0.4543$   $y=0.3910$   $u'=0.2679$   $v'=0.5188$

CCT=2622K (Duv=-0.0069) Dominant WL:Ld =587.2nm Purity=53.7%

Ratio:R=28.2% G=69.3% B=2.5%; Peak WL:Lp=616.7nm FWHM=97.3nm

Render Index:Ra=90.6 CRI=88.7 TM30:Rf=87 Rg=103

R1 =96 R2 =97 R3 =94 R4 =94 R5 =97 R6 =90 R7 =84

R8 =72 R9 =45 R10=97 R11=96 R12=83 R13=98 R14=98 R15=88

### Photo Parameters:

Flux = 314.1 lm Eff. : 29.76 lm/W Fe = 1.051 W

### Electrical parameters:

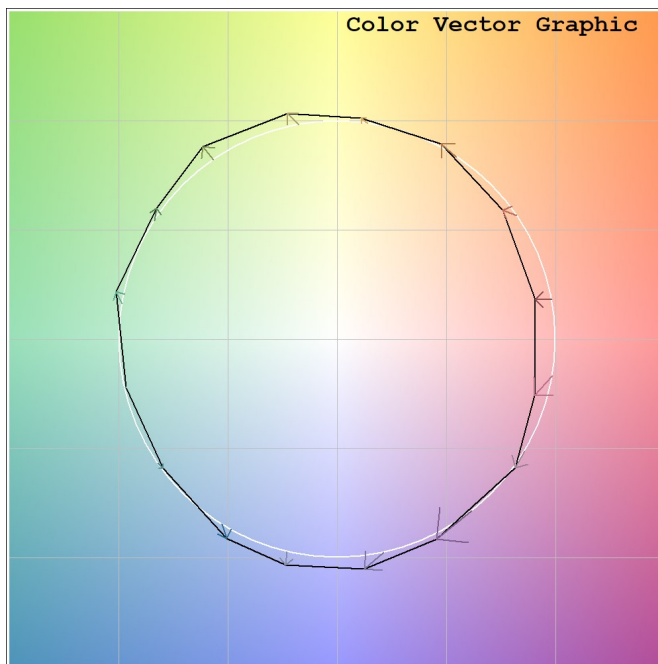
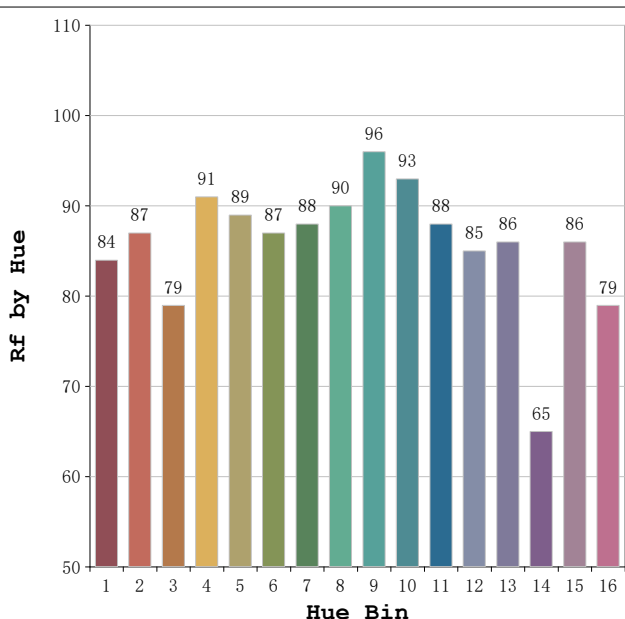
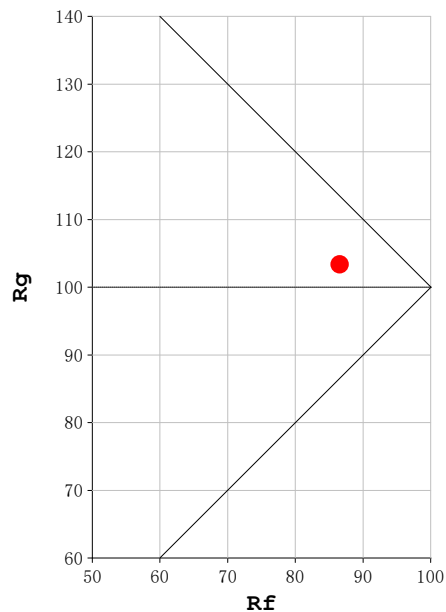
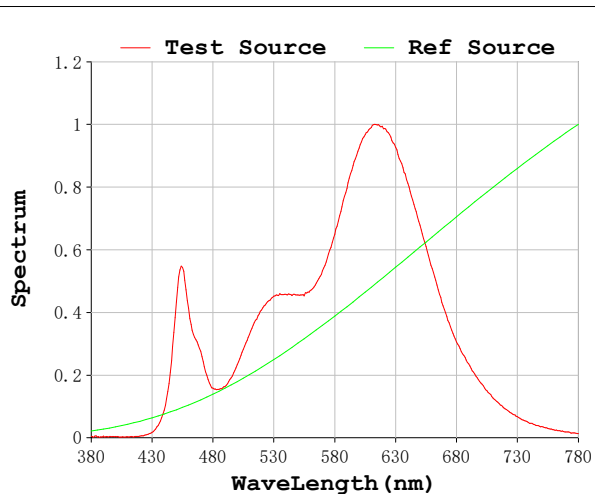
V = 23.998 V I = 0.4399 A P = 10.56 W PF = 1.000

Status: Integral T = 3241 ms Ip = 45845 (70%)

Model:Ecoled Africa Cut&Connect  
 Tester:Sergio Carneros  
 Temperature:27Deg  
 Manufacturer:Luz Negra S.L.

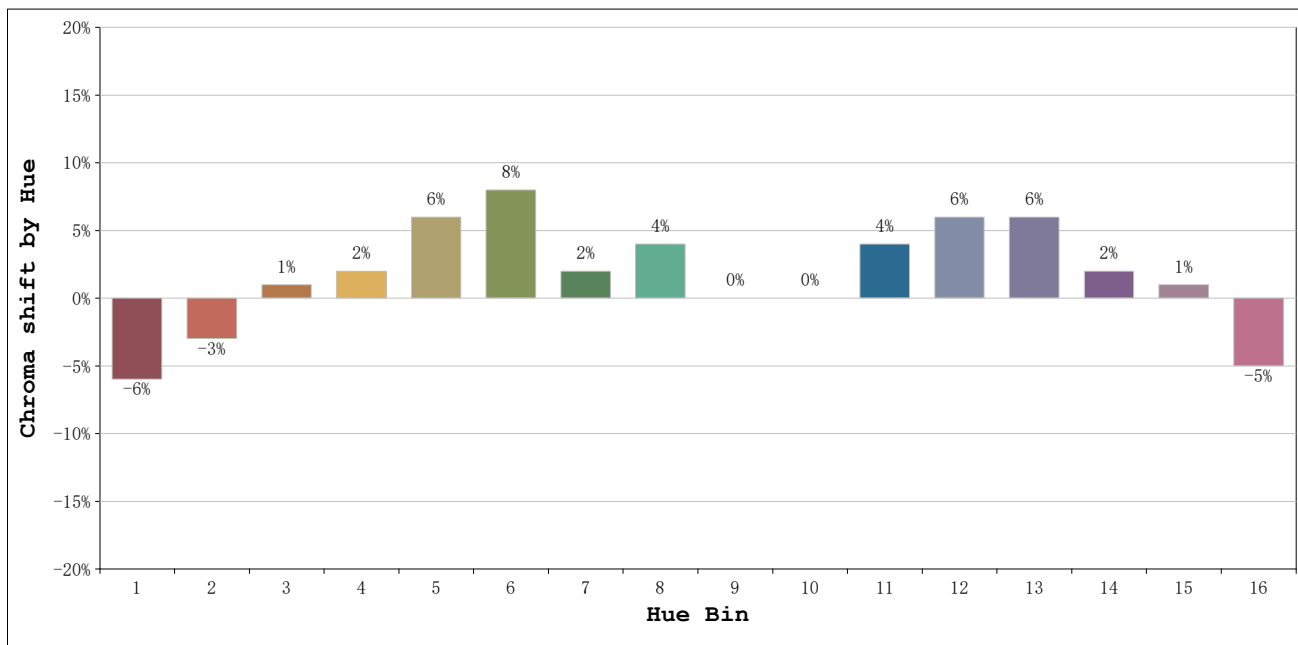
Number: 10.346  
 Date:2026-05-28 15:00:21  
 Humidity:35%  
 Remarks:100cm de neon

**Rf: 87**      **CCT: 2622 K**      **u': 0.2679**  
**Rg: 103**      **Duv: -0.0069**      **v': 0.5188**



Model:Ecoled Africa Cut&Connect  
 Tester:Sergio Carneros  
 Temperature:27Deg  
 Manufacturer:Luz Negra S.L.

Number: 10.346  
 Date:2026-05-28 15:00:21  
 Humidity:35%  
 Remarks:100cm de neon



Hue Bin	Hue Angle	Rf	Graphic shift(%)	
			Chroma	Hue
1	0.0° - 22.5°	84	-6	1
2	22.5° - 45.0°	87	-3	5
3	45.0° - 67.5°	79	1	9
4	67.5° - 90.0°	91	2	3
5	90.0° - 112.5°	89	6	4
6	112.5° - 135.0°	87	8	1
7	135.0° - 157.5°	88	2	-4
8	157.5° - 180.0°	90	4	-4
9	180.0° - 202.5°	96	0	0
10	202.5° - 225.0°	93	0	3
11	225.0° - 247.5°	88	4	6
12	247.5° - 270.0°	85	6	1
13	270.0° - 292.5°	86	6	-9
14	292.5° - 315.0°	65	2	-19
15	315.0° - 337.5°	86	1	-8
16	337.5° - 360.0°	79	-5	-10

Model:Ecoled Africa Cut&Connect  
 Tester:Sergio Carneros  
 Temperature:27Deg  
 Manufacturer:Luz Negra S.L.

Number: 10.346  
 Date:2026-05-28 15:00:21  
 Humidity:35%  
 Remarks:100cm de neon